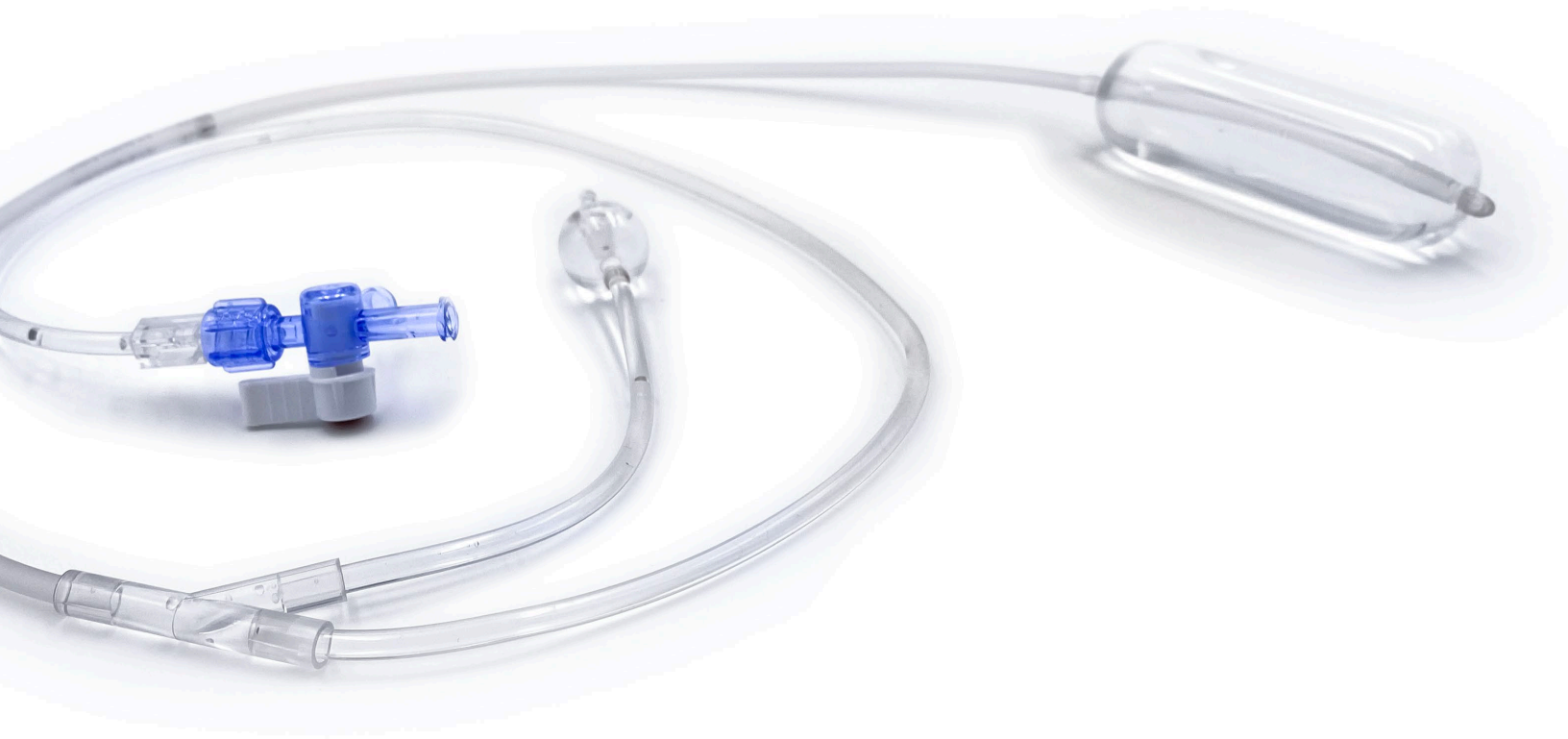


A-View[®]

ENDOTRACHEAL BALLOON CATHETER



 DeRoyal[®]

Improving Care. Improving Business.[®]

RESOLVING THE “BLIND SPOT”

of Transesophageal Echocardiograms

*Stroke remains one of the most
devastating potential complications
of cardiac surgery*



New Clinical Evidence

30% REDUCTION IN MORTALITY

Research Article¹

Impact of Modified Transesophageal Echocardiography on Mortality and Stroke after Cardiac Surgery: A Large Cohort Study




A-View[®]
PROTOCOL



MINIMAL
ADJUSTMENTS



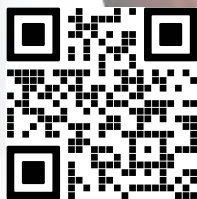
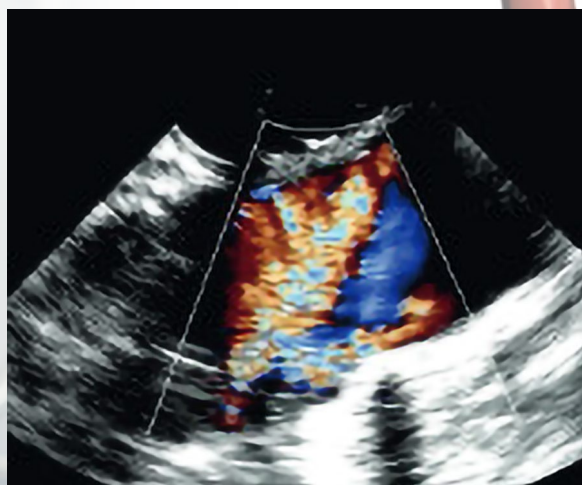
BETTER
OUTCOMES



A-View[®]
Endotracheal Ballon Catheter

Procedures

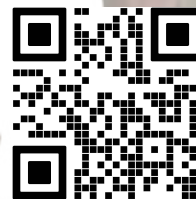
- Open Heart Procedures
- Transcatheter Heart Interventions
- Aortic Stenting
- Robotic Cardiac Surgery
- Aortic Dissection Diagnosis



Scan QR to view
A-View® TAVR Procedure

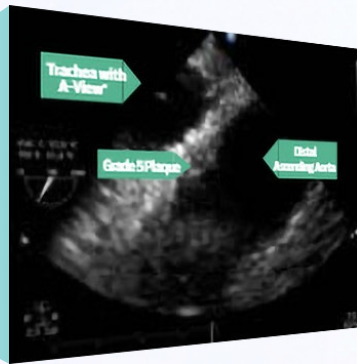


Scan QR to view
A-View® CT Surgery



Scan QR to view
A-View® Vascular TEE Guideline

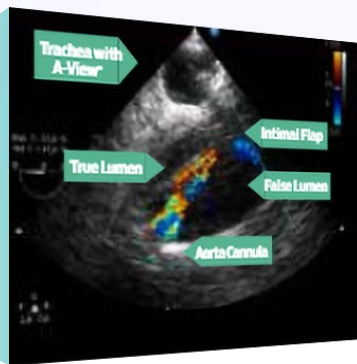
DETECT



Diagnosis of Atherosclerosis

- Determined TAVI approach guided by degree of aortic atherosclerosis
- Detection of atherosclerotic plaques
- Determined cross clamp location based off location of atherosclerotic plaques

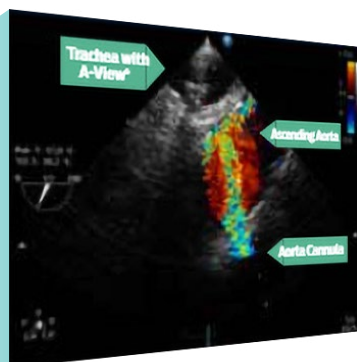
DIAGNOSE



Diagnosis of Aortic Diseases

- Atherosclerosis of the distal ascending aorta in cardiac surgery patients (EUR. HEART J. CARDIOVASC IMAGING 2013 DEC. 26)
- Aortic dissection diagnosis & false lumen imaging

MONITOR



Monitoring Vascular and Cannula Flow

- Cannula flow monitoring
- Cerebral flow monitoring

A-View[®] ENDOTRACHEAL BALLOON CATHETER CLINICAL INFORMATION

A study in more than 8600 cardiac surgery patients demonstrated that perioperative echo screening for aortic atherosclerosis with A-View[®] modified TEE significantly reduced 30-day mortality.

1. Jansen Klomp WW, Moons CGM et al. *Impact of modified transesophageal echocardiography on mortality and stroke after cardiac surgery - a large cohort study*. *Int J Vasc Med*, 2017
2. Jansen Klomp WW, Brandon Bravo Bruinsma GJ et al. *A protocol for diagnosis and management of aortic atherosclerosis in cardiac surgery patients*. *Int J Vasc Med*, 2017
3. Jansen Klomp WW, Peelen LM et al. *Added value of modified transoesophageal echocardiography in the diagnosis of atherosclerosis of the distal ascending aorta in cardiac surgery patients*. *Eur Heart J Cardiovasc Imaging* 2014;15(6):623-630

Routine use of intraoperative monitoring with (modified) transesophageal and/or epiaortic ultrasound should be applied in ALL cardiac surgery procedures in order to identify the patients at risk.

W. W. Jansen Klomp, C. G. M. Moons, A. P. Nierich et al., *Impact of modified transesophageal echocardiography on mortality and stroke after cardiac surgery-a large cohort study*, *International Journal of Vascular Medicine*, 2017.



Improving Care. Improving Business.®

DeRoyal Industries, Inc.
200 DeBusk Lane | Powell, TN 37849
1.800.DEROYAL or 865.938.7828
www.deroyal.com

A-View is a registered trademark of Stroke2Prevent BV.

The DeRoyal logo and Improving Care. Improving Business.
are registered trademark of DeRoyal Industries, Inc.

©2021, DeRoyal. All rights reserved. | Rev. 01/20 | Reprint #0-2512